

LIGHTING

NVS SERIES



NON-METALLIC CORROSION RESISTANT SIGNALS



Pendant LED



Ceiling LED



Wall Xenon

Class I, Div. 2, Groups A,B,C,D
 Class I, Zone 2, Groups IIC, IIB, IIA
 Class II, Div. 1&2, Group F,G;
 Class III
 CSA Enclosure Type 4X, IP66
 NEMA 4X, Marine Rated (US only)

SP Certified - File LBJ1085



FEATURES-SPECIFICATIONS

ENVIORITE®

Signal Luminaires

Applications

These new signal luminaires can be excellent warning devices in corrosive, wet NEMA 4X harsh environments, and in hazardous locations.

NVS signals contain no exposed glass and carry Class II, F&G ratings required for many food processing areas.

Features

- NVSL Series LED with very compact profile and 50,000 hours expected life; steady - on or flashing.
- NVSZ Series Xenon with 10,000 hours expected life; flashing only.
- LED utilizes inverted cone design to provide full 360 degree coverage for more light projection.
- LED and Xenon available in five colors colors - red, green, amber, blue and clear.
- Flash rate for LED is 7 micro flashes approximately every second for increased visual perception.
- Xenon flash rate 60 to 80 per minute
- Can be mounted in any orientation including lens in the UP or SIDE positions.
- Materials: High strength 30% glass-filled thermoset polyester body with Lexan®* lens.
- Resists corrosive effects of most chemicals, hydrocarbons and solvents
- Designed for indoor and outdoor applications

Catalog Numeric Logic

NVS L C F G 01 A A G
 1 2 3 4 5 6 7 8 9

1 NVS - Series Constant Non-Metallic Signal

2 Source

L = LED
 Z = Xenon

3 Fixture Size

C = Compact LED
 M = Medium Xenon

4 Flash State

F = Flashing LED or Xenon
 S = Steady LED

5 Color (Body, Mount, Guard)

G = Gray

6 Voltage

01 - 120VAC 50/60Hz Xenon model
 08 - 240VAC 50/60Hz Xenon model
 25 - 120-240VAC 50/60Hz LED model
 26 - 12-80VDC (24VAC) LED or Xenon

7 Color of Strobe

A = Amber, R = Red, G = Green, B = Blue,
 C = Clear

8 Mount Type

A = 3/4" pendant
 X = 3/4" Ceiling
 B = 3/4" Wall Bracket (consists of ceiling box and elbow to support body)
 M = M20 Ceiling
 W = M20 Wall Mount

9 Guard

G = Guard
 N = No Guard
 Example: NVSLCFG25AAG
 LED Gray Body Flashing Amber
 Pendant w/Guard 120-240VAC

HAZARDOUS LOCATION SUITABILITY

SOURCE	SERIES	CL1 DIV.2	CL2 DIV.1	AMBIENT RANGE
		OPERATING TEMP. CODE	OPERATING TEMP. CODE	
LED	NVSLC	T6	F,G	-40°C to +40°C
Xenon	NVSZM	T2C	F,G	-40°C to +40°C

INTENSITY IN CANDELLAS

	COLOR	FLASHING	STEADY
		LED	Amber
	Red	5.9/10.1*	15.4
	Green	4.5/7.8*	11.8
	Blue	2.5/4.3*	6.6
	Clear	4.8/8.2*	12.5
Xenon	Amber	40	-
	Red	10	-
	Green	20	-
	Blue	20	-
	Clear	50	-

*CD-S/CD-Effective

ELECTRICAL RATINGS MAX.

	ELECTRICAL RATINGS MAX.	
	LED	120VAC
	240VAC	020mA Flash
	12VDC	400mA
	80VDC	60mA
	24VAC	198mA Flash
Xenon	120VAC	.04 Avg.
	240VAC	.02 Avg.
	12VDC	.40 Avg.
	80VDC	.05 Avg.
	24VAC	.35 Avg.

SP to the following standards:

- UL 1598 Standard for luminaires
- UL 1598A Marine type luminaires
- UL 844 Standard for lighting fixtures for hazardous locations
- UL 1638 Standard for visual signalling applications
- CSA C22.2 no.137-M1981 electric luminaires for use in hazardous locations
- Enclosed and gasketed, NEMA 3, 4X IP66

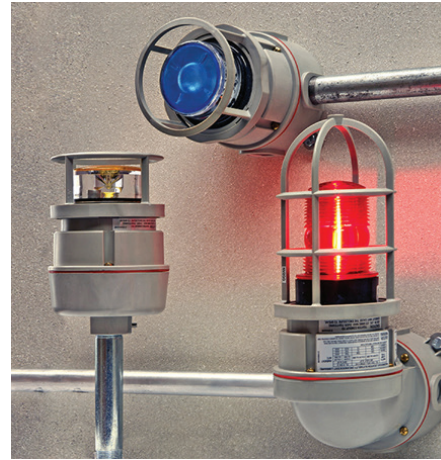
* Lexan® is a registered trademark of General Electric.



NON-METALLIC CORROSION RESISTANT SIGNALS



Down & side orientation



Up & side orientation

FEATURES-SPECIFICATIONS

NVS SERIES DESCRIPTION / CATALOG ORDERING INFORMATION						
	3/4" PENDANT	AMBER	RED	GREEN	BLUE	CLEAR
LED	Flashing 120-240VAC	NVSLCFG25AAG	NVSLCFG25RAG	NVSLCFG25GAG	NVSLCFG25BAG	NVSLCFG25CAG
	Flashing 12-80VDC; 24VAC	NVSLCFG26AAG	NVSLCFG26RAG	NVSLCFG26GAG	NVSLCFG26BAG	NVSLCFG26CAG
	Steady 120-240VAC	NVSLCSG25AAG	NVSLCSG25RAG	NVSLCSG25GAG	NVSLCSG25BAG	NVSLCSG25CAG
	Steady 12-80VDC; 24VAC	NVSLCSG26AAG	NVSLCSG26RAG	NVSLCSG26GAG	NVSLCSG26BAG	NVSLCSG26CAG
XENON	Flashing 120VAC	NVSMFG01AAG	NVSMFG01RAG	NVSMFG01GAG	NVSMFG01BAG	NVSMFG01CAG
	Flashing 12-80VDC; 24VAC	NVSMFG26AAG	NVSMFG26RAG	NVSMFG26GAG	NVSMFG26BAG	NVSMFG26CAG
	Flashing 240VAC	NVSMFG08AAG	NVSMFG08RAG	NVSMFG08GAG	NVSMFG08BAG	NVSMFG08CAG
	3/4" CEILING	AMBER	RED	GREEN	BLUE	CLEAR
LED	Flashing 120-240VAC	NVSLCFG25AXG	NVSLCFG25RXG	NVSLCFG25GXG	NVSLCFG25BXG	NVSLCFG25CXG
	Flashing 12-80VDC; 24VAC	NVSLCFG26AXG	NVSLCFG26RXG	NVSLCFG26GXG	NVSLCFG26BXG	NVSLCFG26CXG
	Steady 120-240VAC	NVSLCSG25AXG	NVSLCSG25RXG	NVSLCSG25GXG	NVSLCSG25BXG	NVSLCSG25CXG
	Steady 12-80VDC; 24VAC	NVSLCSG26AXG	NVSLCSG26RXG	NVSLCSG26GXG	NVSLCSG26BXG	NVSLCSG26CXG
XENON	Flashing 120VAC	NVSMFG01AXG	NVSMFG01RXG	NVSMFG01GXG	NVSMFG01BXG	NVSMFG01CXG
	Flashing 12-80VDC; 24VAC	NVSMFG26AXG	NVSMFG26RXG	NVSMFG26GXG	NVSMFG26BXG	NVSMFG26CXG
	Flashing 240VAC	NVSMFG08AXG	NVSMFG08RXG	NVSMFG08GXG	NVSMFG08BXG	NVSMFG08CXG
	3/4" WALL	AMBER	RED	GREEN	BLUE	CLEAR
LED	Flashing 120-240VAC	NVSLCFG25ABG	NVSLCFG25RBG	NVSLCFG25GBG	NVSLCFG25BBG	NVSLCFG25CBG
	Flashing 12-80VDC; 24VAC	NVSLCFG26ABG	NVSLCFG26RBG	NVSLCFG26GBG	NVSLCFG26BBG	NVSLCFG26CBG
	Steady 120-240VAC	NVSLCSG25ABG	NVSLCSG25RBG	NVSLCSG25GBG	NVSLCSG25BBG	NVSLCSG25CBG
	Steady 12-80VDC; 24VAC	NVSLCSG26ABG	NVSLCSG26RBG	NVSLCSG26GBG	NVSLCSG26BBG	NVSLCSG26CBG
XENON	Flashing 120VAC	NVSMFG01ABG	NVSMFG01RBG	NVSMFG01GBG	NVSMFG01BBG	NVSMFG01CBG
	Flashing 12-80VDC; 24VAC	NVSMFG26ABG	NVSMFG26RBG	NVSMFG26GBG	NVSMFG26BBG	NVSMFG26CBG
	Flashing 240VAC	NVSMFG08ABG	NVSMFG08RBG	NVSMFG08GBG	NVSMFG08BBG	NVSMFG08CBG

LIGHTING

NVS SERIES



COMPONENT / REPLACEMENT PARTS	
CATALOG NO.	DESCRIPTION
NVSLC LED SERIES ①	
NVSLCFG25A	LED BODY AMBR FLASH 120-240VAC
NVSLCFG25R	LED BODY RED FLASH 120-240VAC
NVSLCFG25G	LED BODY GRN FLASH 120-240VAC
NVSLCFG25B	LED BODY BLUE FLASH 120-240VAC
NVSLCFG25C	LED BODY CLR FLASH 120-240VAC
NVSLCSG25A	LED BODY AMBR STEADY 120-240VAC
NVSLCSG25R	LED BODY RED STEADY 120-240VAC
NVSLCSG25G	LED BODY GRN STEADY 120-240VAC
NVSLCSG25B	LED BODY BLUE STEADY 120-240VAC
NVSLCSG25C	LED BODY CLR STEADY 120-240VAC
NVSLCFG26A	LED BODY AMBR FLASH 12-80VDC: 24VAC
NVSLCFG26R	LED BODY RED FLASH 12-80VDC: 24VAC
NVSLCFG26G	LED BODY GRN FLASH 12-80VDC: 24VAC
NVSLCFG26B	LED BODY BLUE FLASH 12-80VDC: 24VAC
NVSLCFG26C	LED BODY CLR FLASH 12-80VDC: 24VAC
NVSLCSG26A	LED BODY AMBR STEADY 12-80VDC: 24VAC
NVSLCSG26R	LED BODY RED STEADY 12-80VDC: 24VAC
NVSLCSG26G	LED BODY GRN STEADY 12-80VDC: 24VAC
NVSLCSG26B	LED BODY BLUE STEADY 12-80VDC: 24VAC
NVSLCSG26C	LED BODY CLR STEADY 12-80VDC: 24VAC

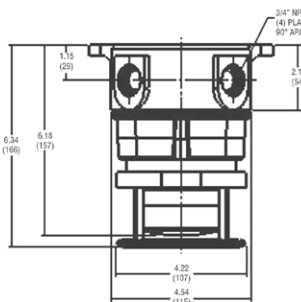
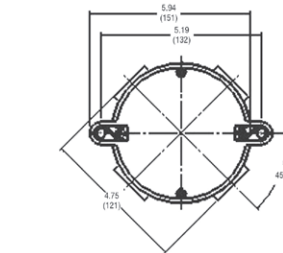


NV2GG-S
Compact Guard

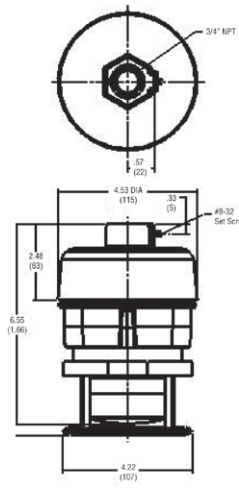


NV2GG
Medium Guard

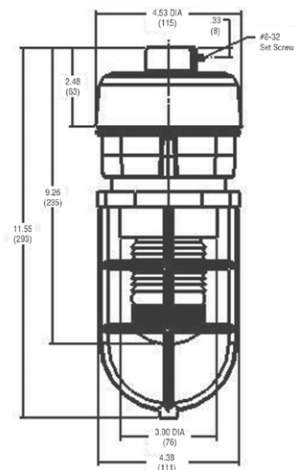
DIMENSIONS



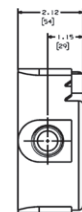
Ceiling/Wall
NVSL LED



Pendant
NVSL LED



Pendant
NVSZ Xenon



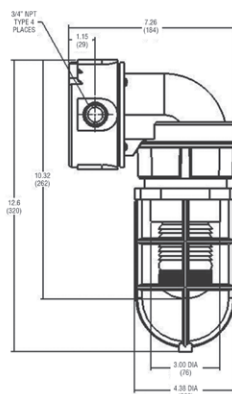
NV2GG-S NVSLC Compact LED Guard
① Body and Lens w/o Mounting Box or Guard

NVSZM XENON SERIES ②	
NVSZMFG01	NVS XENON BODY with LAMP 120VAC
NVSZMFG08	NVS XENON BODY with LAMP 240VAC
NVSZMFG26	NVS XENON BODY with LAMP 12-80VDC; 24VAC
NVSZ-LAMP	NVS XENON REPLACEMENT LAMP
NVSMA	NVS AMBER LENS & GASKET
NVSMR	NVS RED LENS & GASKET
NVSMG	NVS GREEN LENS & GASKET
NVSMB	NVS BLUE LENS & GASKET
NVSMC	NVS CLEAR LENS & GASKET
NV2GG	NVSZM MEDIUM XENON GUARD

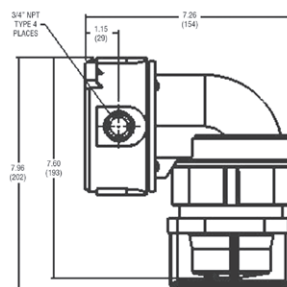
② Body and Power Supply w/ Lamp

NVS MOUNTING BOXES ③	
NV2XG	NVS Ceiling/Wall Mtg Box
NV2AG	NVS Pendant Box
NV2BG	NVS Wall Elbow (use with NV2XG/ NV2MG Box)
NV2MG	NVS M20 Ceiling/Wall Mtg Box

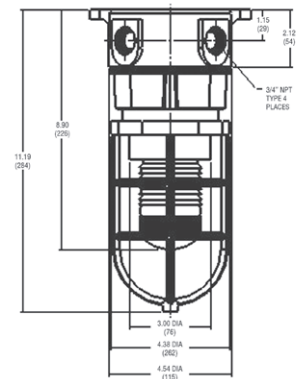
③ See NV2 series for additional information



Wall
NVSZ Xenon



Wall
NVSL LED



Ceiling/Wall
NVSZ Xenon